

DEPARTMENT OF CALIFORNIA HIGHWAY PATROL

MOTOR TRANSPORT BULLETIN 69-7

JANUARY 31, 1969

SUBJECT: EMERGENCY EQUIPMENT WIRING DIAGRAM

MODEL: 1968 & 1969 DODGE

GENERAL:

Attached are schematic wiring diagrams for the emergency equipment installed by the Motor Transport Section for both the 1968 and 1969 Dodge Class "A" patrol vehicles. These diagrams are intended for use by the Automotive Servicemen, Maintenance Men, and automotive dealers and garages in locating electrical problems in the emergency equipment installed in the 1968 and 1969 Dodge.

TURN SIGNAL FLASHER:

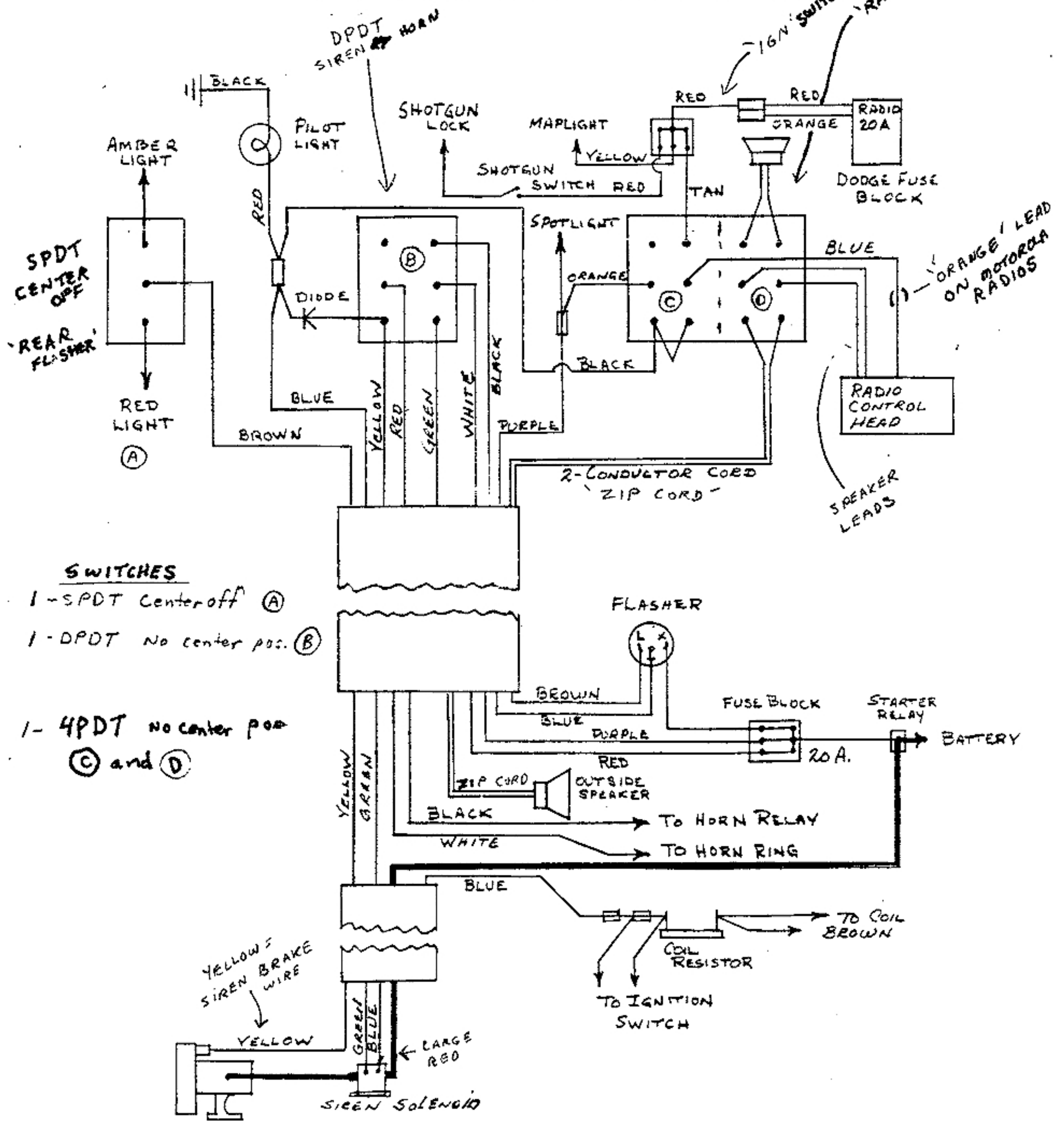
On the 1969 Dodge the connection for the turn signals has been changed from the factory connection so that the turn signals will operate without the ignition key. This was done in order to eliminate the condition where the shotgun lock could be opened without the ignition key. DO NOT CHANGE THE TURN SIGNAL CIRCUIT BACK TO THE ORIGINAL FACTORY CONNECTION.

PUBLIC ADDRESS SYSTEM:

On some of the early 1969 Dodges equipped with a public address system, the power supply lead was connected to the same terminal, on the fuse block mounted under the dashboard, as the brown lead to the radio "inside" position. The 1969 Dodges equipped with a public address system after January 21, 1969, have the public address system power supply lead connected to the same terminal as the shotgun lock. Either connection is satisfactory; however, it is believed more desirable to separate the radio and public address systems as shown on the attached diagrams.

Attach. (2)

1968 DODGE WIRING DIAGRAM



SWITCHES

- 1 - SPDT Center off (A)
- 1 - DPDT No center pos. (B)
- 1 - 4PDT No center pos (C) and (D)

IGN SWITCH OVER-RIDE FOR RADIO ONLY
 RADIO INSIDE → OUTSIDE

ORANGE LEAD ON MOTOROLA RADIOS

SPEAKER LEADS

2-CONDUCTOR CORD 'ZIP CORD'

FLASHER

FUSE BLOCK

STARTER RELAY

BATTERY

20 A.

OUTSIDE SPEAKER

TO HORN RELAY

TO HORN RING

TO COIL BROWN

COIL RESISTOR

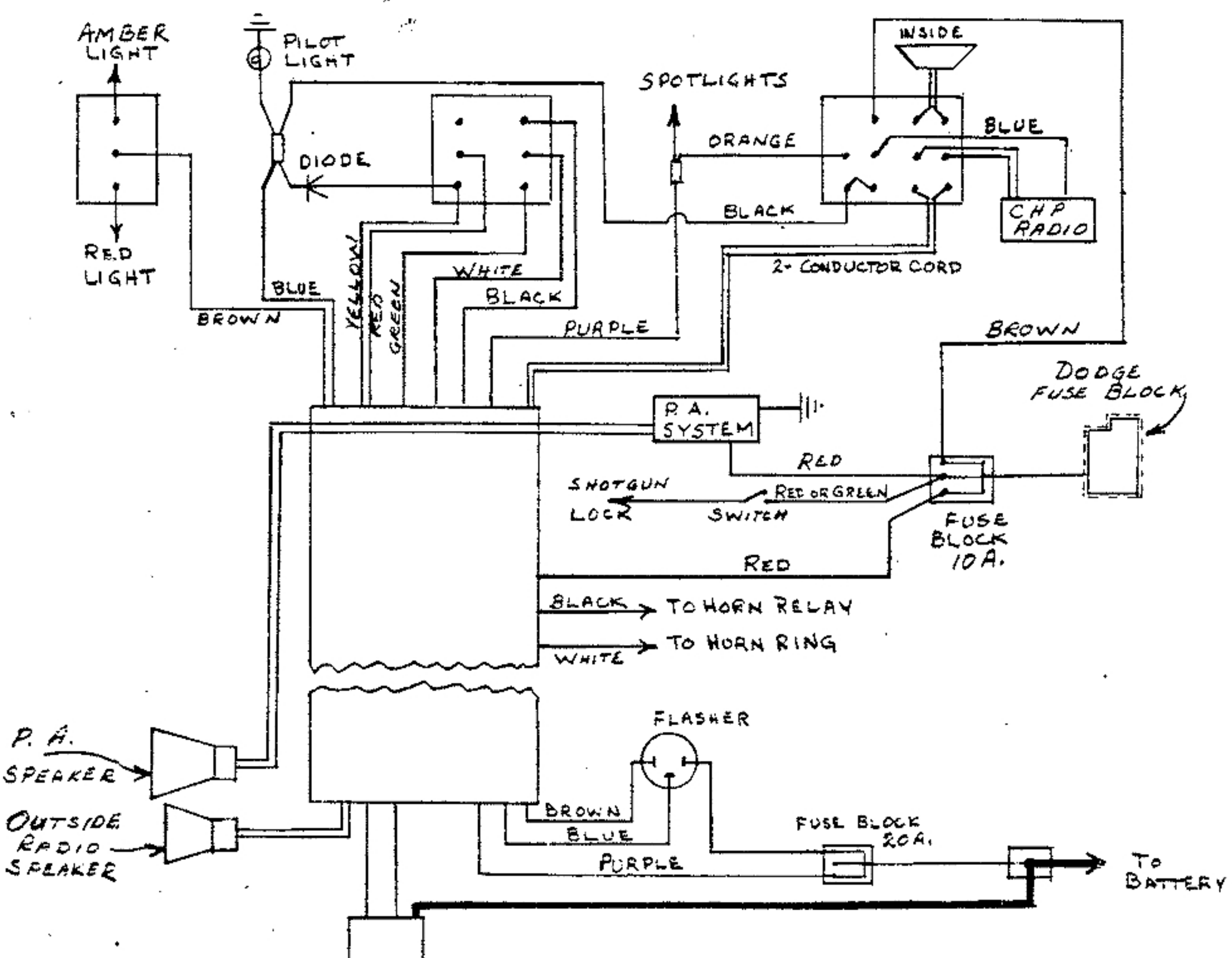
TO IGNITION SWITCH

YELLOW'S SIREN BRAKE WIRE

SIREN SOLENOID

LARGE RED

1969 DODGE WIRING DIAGRAM



OTHER CHANGES

